

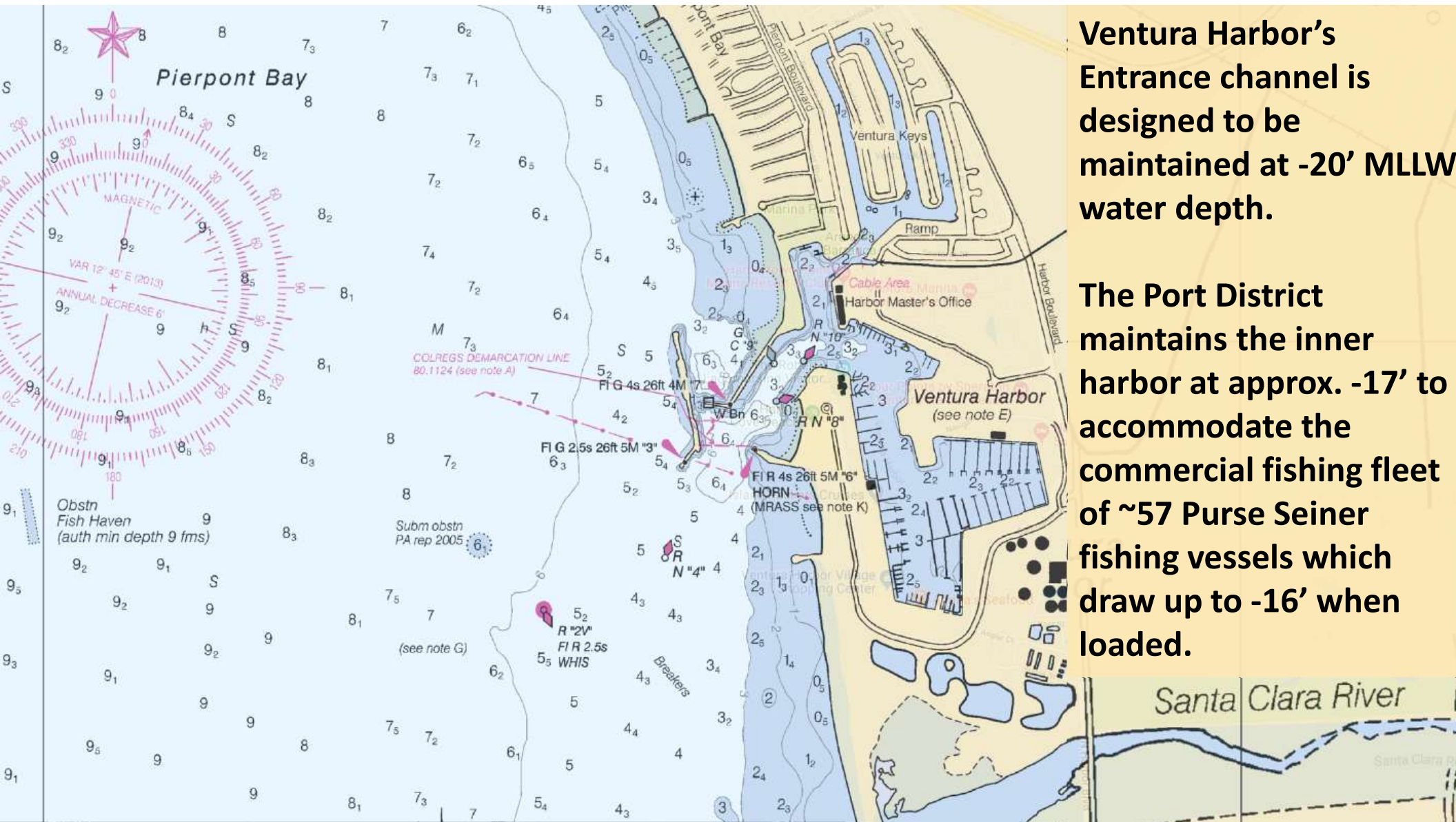


# BEACON

## May 22, 2026

Ventura Harbor Dredging &  
Beach Nourishment in 2026





**Ventura Harbor's Entrance channel is designed to be maintained at -20' MLLW water depth.**

**The Port District maintains the inner harbor at approx. -17' to accommodate the commercial fishing fleet of ~57 Purse Seiner fishing vessels which draw up to -16' when loaded.**

# Ventura Harbor



Sand Trap

Federal Channel  
Entrance

Arundell Barranca

Surfer's Knoll Beach

# Dredging of the Federal Navigation Channel

- In the 1950's, the state of California was building the Coast highway through Ventura.
- It was agreed that the state would excavate the harbor for highway construction fill material.
- The City of San Buenaventura was responsible for the initial harbor design and maintenance.
- In 1968, Congress directed the Corps of Engineers to take over responsibility for the navigation features of this harbor.



# Dredging of the Federal Navigation Channel

- In 1969, when severe flooding of the Santa Clara River damaged the harbor, the Corps of Engineers repaired the damages and reinforced the levy between the Santa Clara River delta and the harbor.
- In 1971, an offshore breakwater was constructed to reduce shoaling at the harbor entrance.
- Currently, the Los Angeles District of the Corps of Engineers maintains the federal channel entrance and navigation features of the harbor and performs periodic (annual) maintenance dredging.

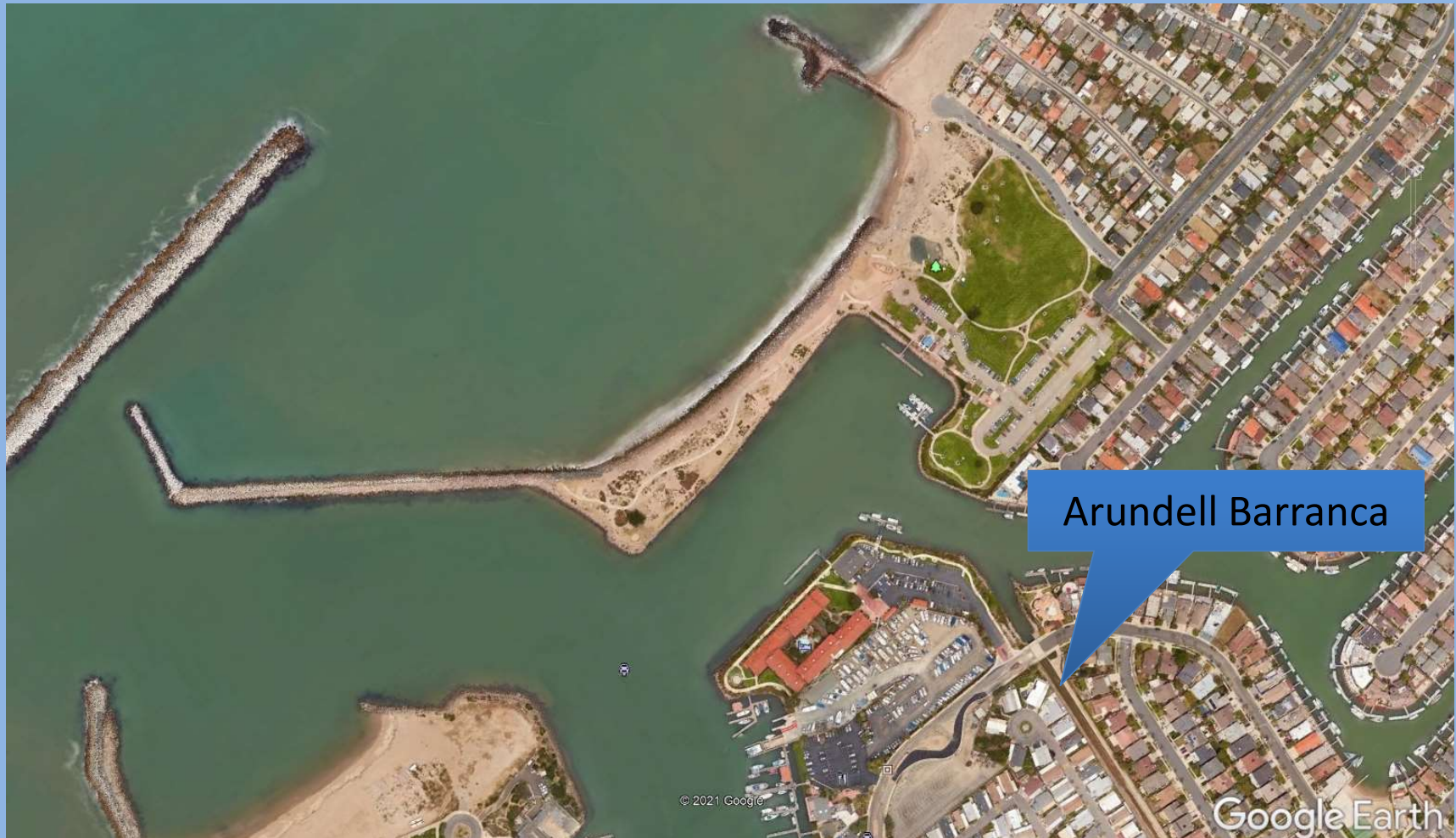
# Federal Navigation Channel



Sand Trap

Federal Channel  
Entrance

# Inner Harbor Stub Channel



Arundell Barranca

## Dredging of the Inner Harbor

- Because it is not on an estuary, most of the inner harbor of Ventura does not require maintenance dredging.
- However, the Arundell Barranca does feed the channel connecting the Ventura Keys to the harbor entrance and contributes about 6,000 cubic yards of material annually that must be removed periodically.
- Typically, inner harbor dredging takes place every 2-5 years and moves an average of 30,000 cubic yards of material.
  - ~6% of the federal program

## Dredge Material

- The federal navigation channel and sand trap consist principally of coarse grain sand suitable for beach nourishment.
- On average over the past 20 years, 550,000 cubic yards of material is dredged from the channel and sand trap
- The federal dredge material is placed from the south jetty beach southward.
- Inner harbor dredge material is regularly tested and can be “paired” with outer harbor material and thereby placed on the beach (permitted via Corps, Water Board, Coastal Commission).

# Dredging In Action



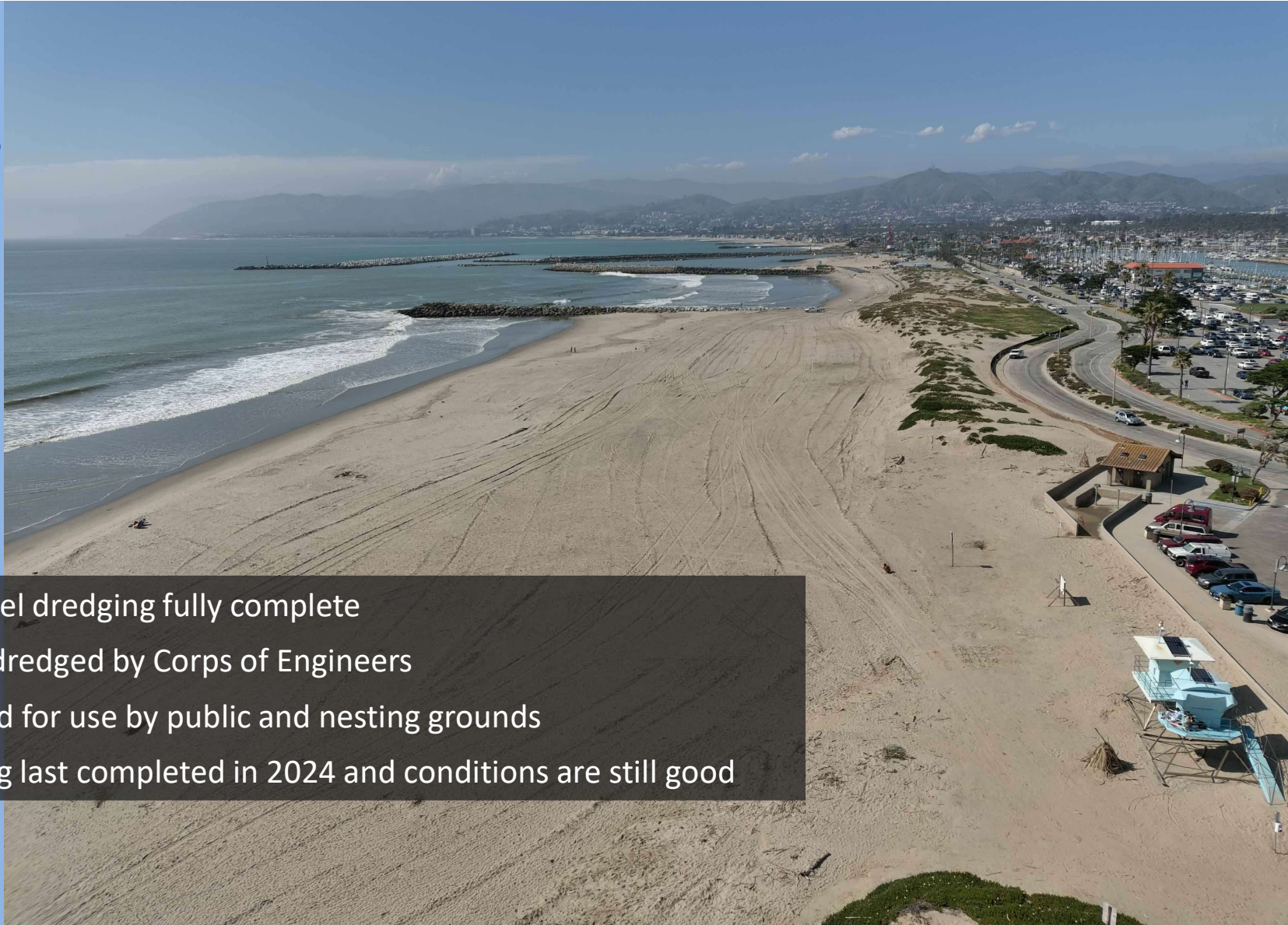
# Dredging In Action



# Dredging Material Placement



# Where are we Today?



- 2026 entrance channel dredging fully complete
- 349,000 cubic yards dredged by Corps of Engineers
- Beaches fully restored for use by public and nesting grounds
- Inner harbor dredging last completed in 2024 and conditions are still good

## What about tomorrow?

- **The FY2027 federal budget for navigation dredging removed ALL PROJECTS performed by the Los Angeles District of the Army Corps of Engineers!**
- This is a huge blow for all harbors in South Central/Southern California.
- While Congress can (and does) increase the amount dedicated to dredging and beach nourishment projects (“Work Plan”), the timing of that is delayed (because budgets are delayed).
- If the government doesn’t pass a budget at all, then there’s no Work Plan.

# What about tomorrow?

...look back 10 years ago...

## Boating restricted at Ventura Harbor as sand accumulates at entrance

John Scheibe Ventura County Star

Jan. 21, 2016, 4:23 p.m. PT



Strong currents, waves and 1 million cubic yards of sand in need of dredging means the Ventura Harbor entrance will be closed to most boats for two weeks, possibly longer, officials said Monday.

*"Safety is our main priority," Higgins said. "We are discouraging any nonessential boating at this time because of the hazards."*

Longtime frequenters of the harbor, including officials, don't remember the last time it was closed to boat traffic. Some say the harbor last closed in the 1980s.

JOSEPH A. GARCIA/THE STAR A sailboat glides around Ventura Harbor on Saturday afternoon. (Photo: Joseph A. Garcia)

# So, It's Time to Get Political....

