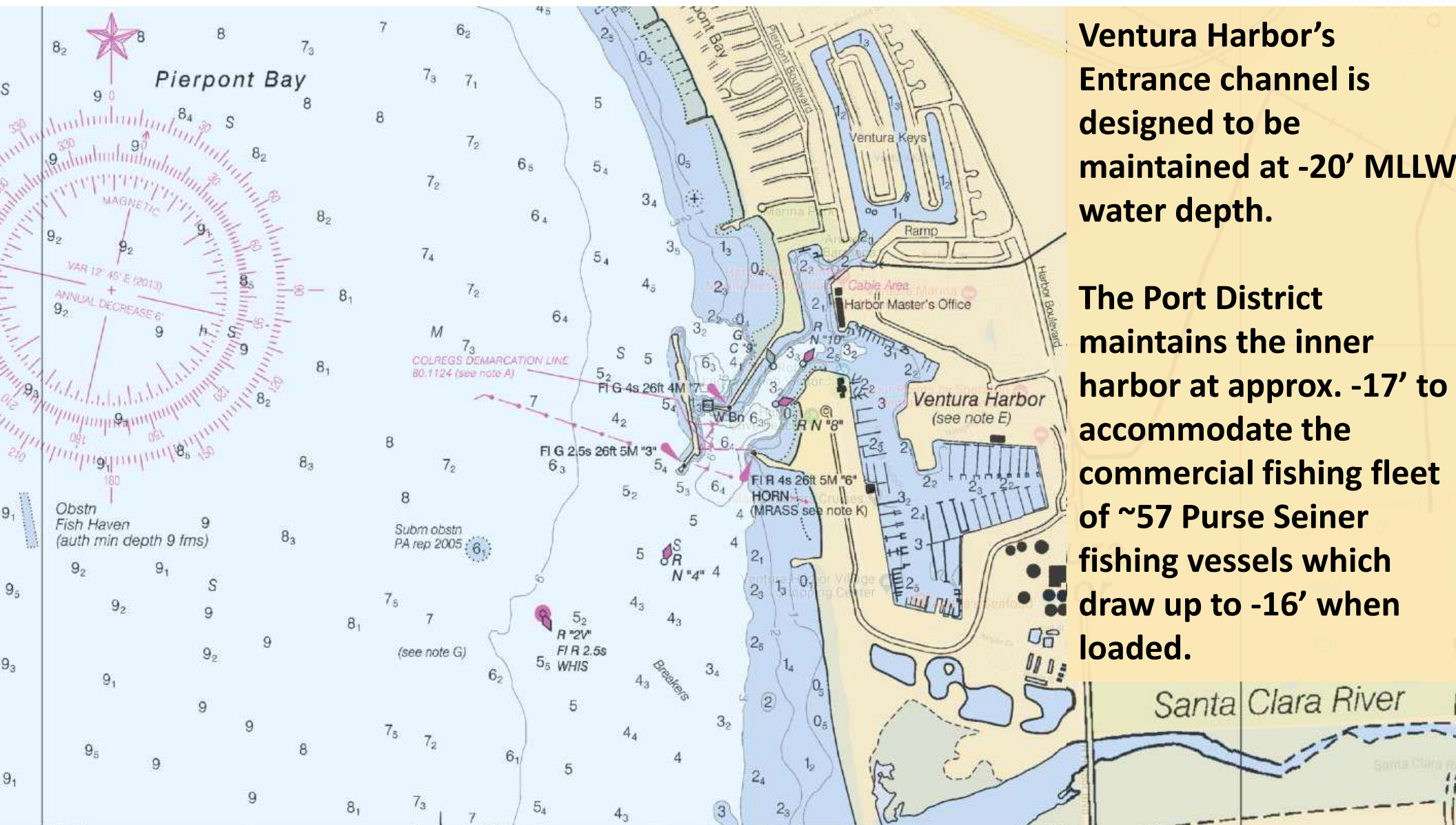




BEACON Sand Summit May 9, 2024

Ventura Harbor Dredging &
Beach Nourishment in 2024





Ventura Harbor's Entrance channel is designed to be maintained at -20' MLLW water depth.

The Port District maintains the inner harbor at approx. -17' to accommodate the commercial fishing fleet of ~57 Purse Seiner fishing vessels which draw up to -16' when loaded.

Ventura Harbor



Sand Trap

Federal Channel
Entrance

Arundell Barranca

Surfer's Knoll Beach

Dredging of the Federal Navigation Channel

- In the 1950's, the state of California was building the Coast highway through Ventura.
- It was agreed that the state would excavate the harbor for highway construction fill material.
- The City of San Buenaventura was responsible for the initial harbor design and maintenance.
- In 1968, Congress directed the Corps of Engineers to take over responsibility for the navigation features of this harbor.



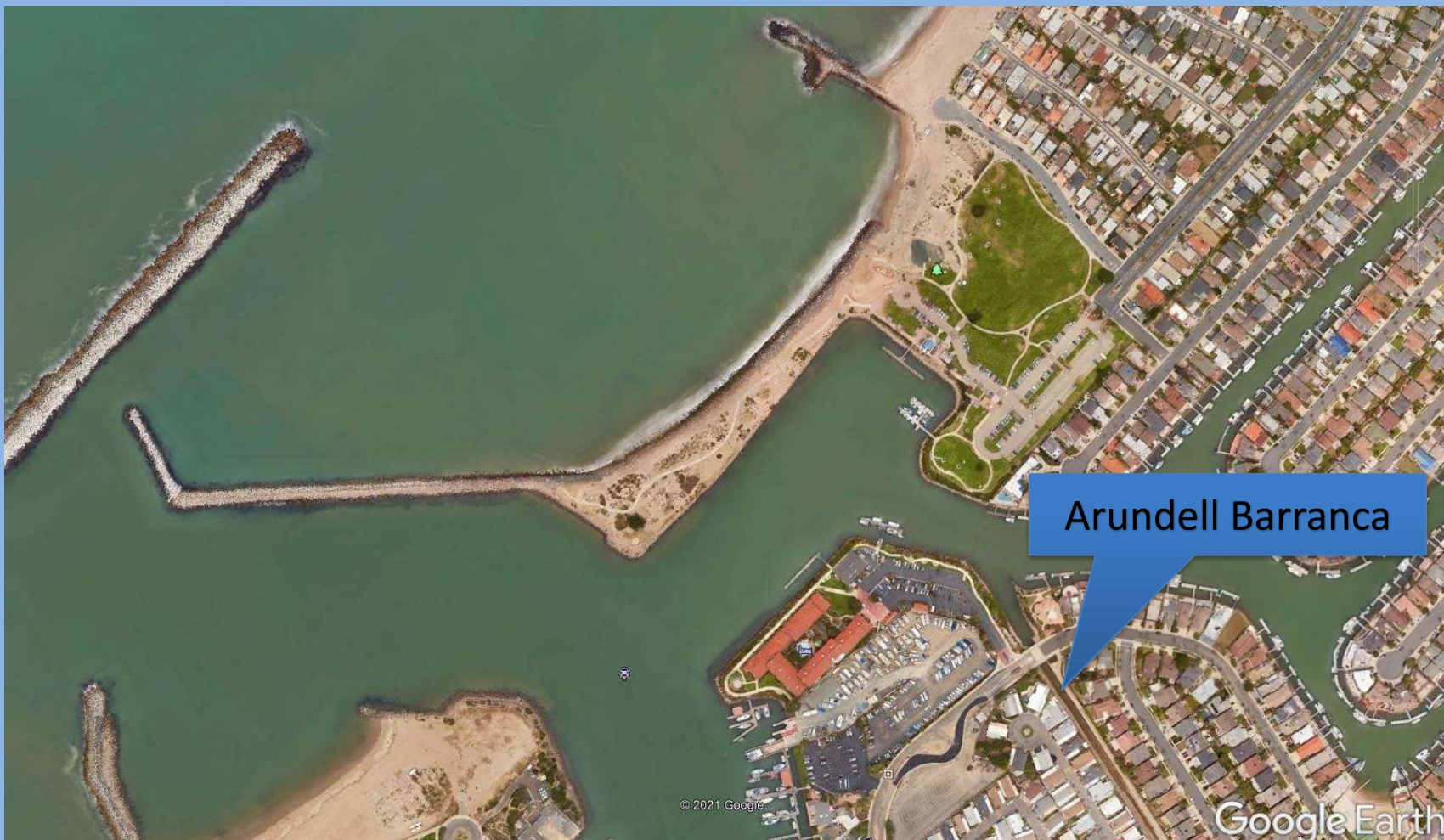
Dredging of the Federal Navigation Channel

- In 1969, when severe flooding of the Santa Clara River damaged the harbor, the Corps of Engineers repaired the damages and reinforced the levy between the Santa Clara River delta and the harbor.
- In 1971, an offshore breakwater was constructed to reduce shoaling at the harbor entrance.
- Currently, the Los Angeles District of the Corps of Engineers maintains the federal channel entrance and navigation features of the harbor and performs periodic (annual) maintenance dredging.

Federal Navigation Channel



Inner Harbor Stub Channel



Dredging of the Inner Harbor

- Because it is not on an estuary, most of the inner harbor of Ventura does not require maintenance dredging.
- However, the Arundell Barranca does feed the channel connecting the Ventura Keys to the harbor entrance and contributes about 6,000 cubic yards of material annually that must be removed periodically.
- Typically, inner harbor dredging takes place every 2-5 years and moves an average of 30,000 cubic yards of material.
 - ~6% of the federal program

2023 and 2024 Storm Events

- The 2023 Atmospheric River events deposited ~45,000 cubic yards in the single event.
- Storm events at the beginning of 2024 also contributed sediment deposits – but in this case it was from wave action pushing sand from the beach over and through the revetment near the beach.
- Both of these sets of events also significantly eroded Harbor beaches and deposited a lot of wood debris on the beaches.

2023 Atmospheric River Events



Degraded Beach Conditions Both Years



Degraded Beach Conditions Both Years



Degraded Beach Conditions Both Years



Degraded Beach Conditions Both Years



Dune Erosion



Degraded Beach Conditions Both Years



Dredge Material

- The federal navigation channel and sand trap consist principally of coarse grain sand suitable for beach nourishment.
- On average over the past 20 years, 550,000 cubic yards of material is dredged from the channel and sand trap
- The federal dredge material is placed from the south jetty beach southward.
- Inner harbor dredge material is regularly tested and can be “paired” with outer harbor material and thereby placed on the beach (permitted via Corps, Water Board, Coastal Commission).

Dredging In Action



Dredging In Action



Dredging In Action



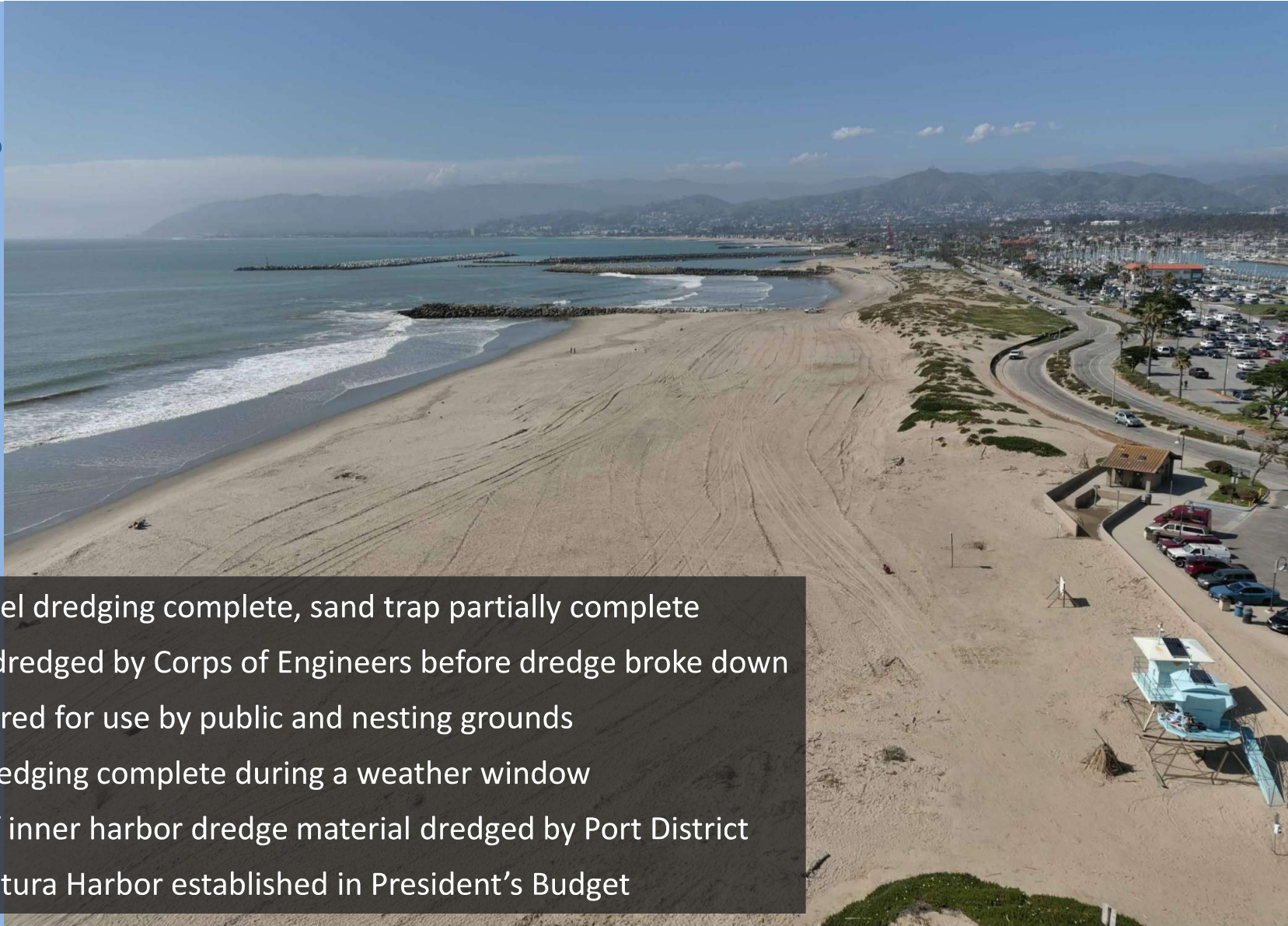
Dredging Material Placement



Dredging Material Placement

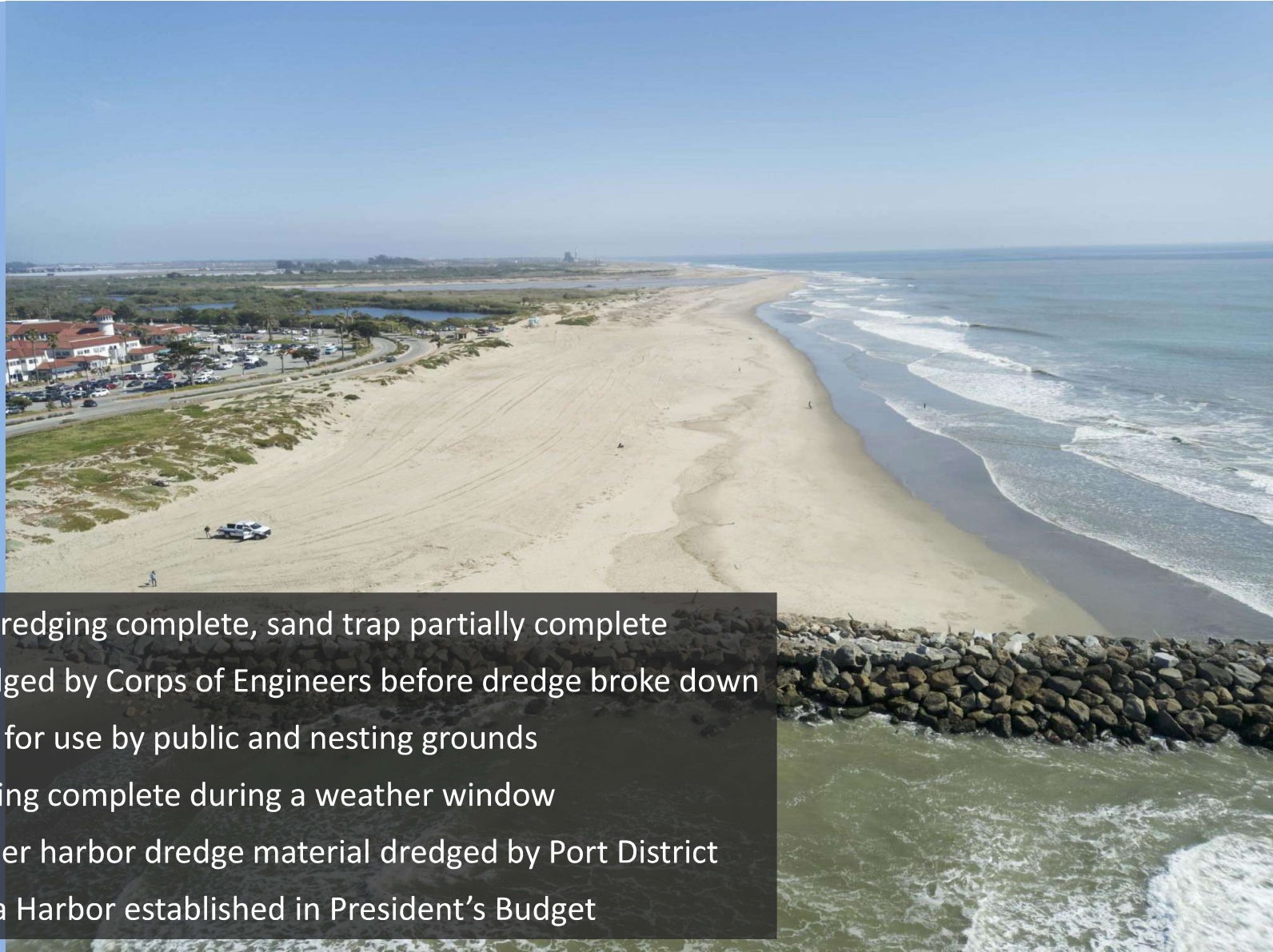


Where are we Today?



- 2024 entrance channel dredging complete, sand trap partially complete
- 365,000 cubic yards dredged by Corps of Engineers before dredge broke down
- Beaches largely restored for use by public and nesting grounds
- 2024 inner harbor dredging complete during a weather window
- 94,000 cubic yards of inner harbor dredge material dredged by Port District
- FY25 Funding for Ventura Harbor established in President's Budget

Where are we Today?



- 2024 entrance channel dredging complete, sand trap partially complete
- 365,000 cubic yards dredged by Corps of Engineers before dredge broke down
- Beaches largely restored for use by public and nesting grounds
- 2024 inner harbor dredging complete during a weather window
- 94,000 cubic yards of inner harbor dredge material dredged by Port District
- FY25 Funding for Ventura Harbor established in President's Budget

This Is Political! We have the support of our elected officials – BUT You Need to do the Work!



Make Sure the Public Knows About Success!

 WATCH LIVE

Ventura Harbor beaches replenished after storms cause erosion

By [Sid Garcia](#) 

Tuesday, March 28, 2023


     








Ventura Harbor beaches have been severely eroded by recent storms, but they have been in the process of being restored.


VENTURA, Calif. (KABC) -- Ventura Harbor beaches have been severely eroded by recent storms, but they have been in the process of being restored.

Dredging work started in January, and more than 400,000 cubic tons of sand has been used to fix the erosion caused by Southern California's wet winter.

 VENTURA PORT DISTRICT
Established 1952

About the Port  Visit the Waterfront  Business  Port Commission  Public Records 

VENTURA HARBOR CELEBRATES \$8.4M IN DREDGING THANKS TO CONGRESSMAN SALUD CARBAJAL AND THE U.S. ARMY CORPS OF ENGINEERS



RECENT HAPPENINGS & EVENTS

Ventura Harbor Village is calling your name this spring with a new lineup of events and entertainment!

VENTURA PORT DISTRICT RECEIVES \$200,000 GRANT FROM NATIONAL FISH AND WILDLIFE FOUNDATION (NFWF)

Ventura Harbor Celebrates \$8.4M in