



The Port
OF Hueneme

We Make Cargo Move

BEACON
January 26, 2024



EMBRACED SHORESIDE POWER EARLY

- BUILT IT ON TIME / PRIORITIZED COMPLIANCE
- INNOVATIVE AND FOUND THE \$14M (*only had \$4M unrestricted cash*)
- COMMISSIONED: NOV 2013
- CUSTOMERS USE: JAN 2014
- OPERATIONAL FOR ALL CONTAINER SHORESIDE CAPABLE VESSELS



December 21st 2023

UNPREDICTABLE PORT HUENEME RAIN STORM

“The frequency of this kind of event is on the order of once in every thousand years,” meteorologist **Mike Wofford with the National Weather Service** in Oxnard said of the storm.

“This is likely the heaviest rainfall that has been observed in this area in recorded history and is likely a multi-centennial kind of event,” Daniel Swain, a climate **scientist with UCLA**, said during a briefing

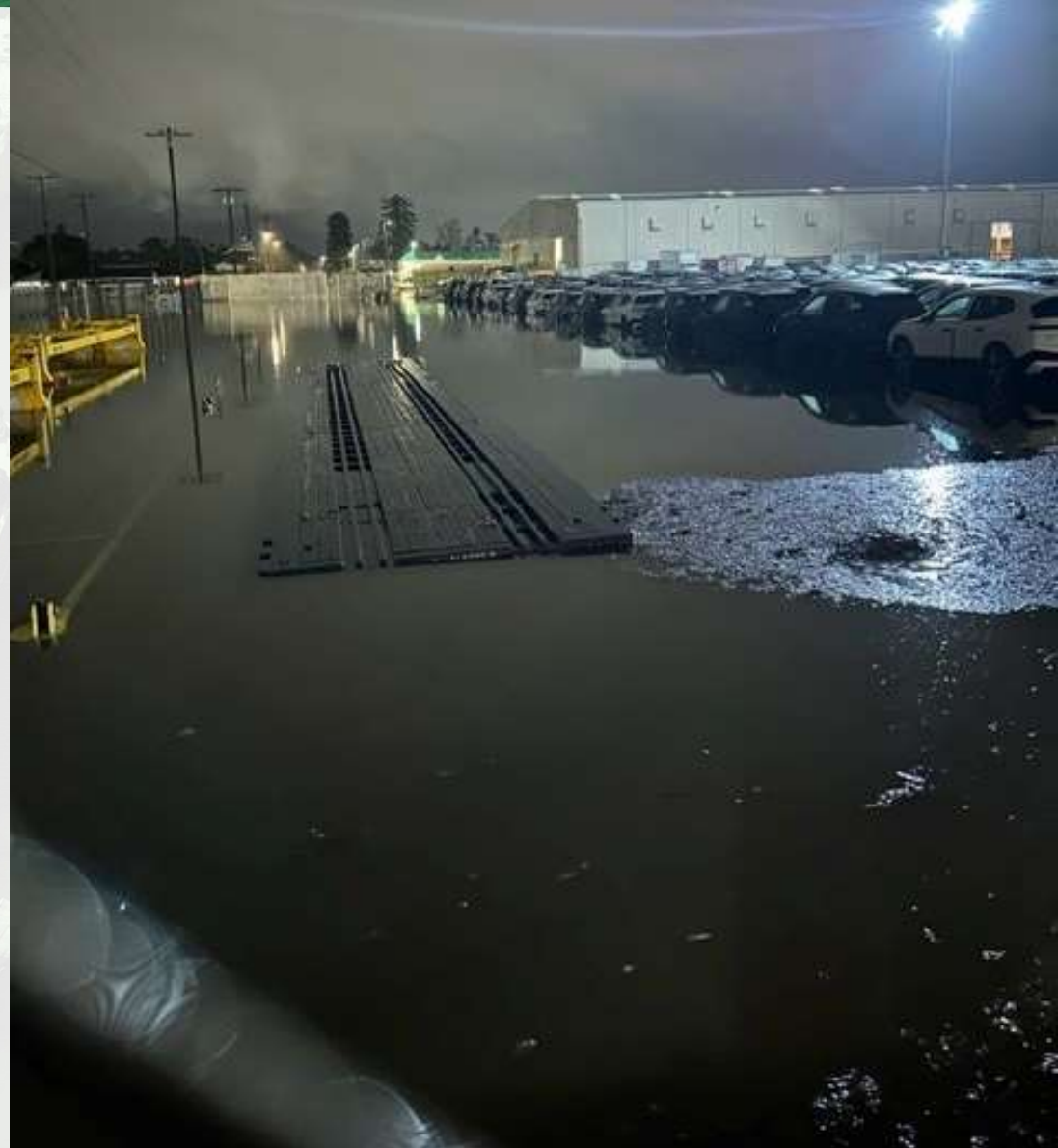
Los Angeles Times

UNPREDICTABLE, OUT OF OUR CONTROL, NOTHING WE COULD DO TO CHANGE THE OUTCOME

EMERGENCY RESPONSE

ALL-HANDS-ON-DECK – CITY AND PORT CREWS

- 2:15am Power outage to shore power; sparks/explosion reported
- Crews responded- emergency response triage initiated
- Efforts to keep storm water drains working and remove debris by Port and City crews
- Port Hueneme City vacuum truck deployed
- Efforts continued all night and the following day
- Despite best efforts, unable to abate the inundation



PORT PROPERTY- SHORE POWER SUB-STATION

DECEMBER 21ST



01
02
03

Clara St. Inundation

DECEMBER 21ST



Clara St. Inundation

DECEMBER 21ST



PORT PROPERTY- SHORE POWER SUB-STATION

DECEMBER 21ST



PORT PROPERTY- SHORE POWER SUB-STATION

DECEMBER 21ST



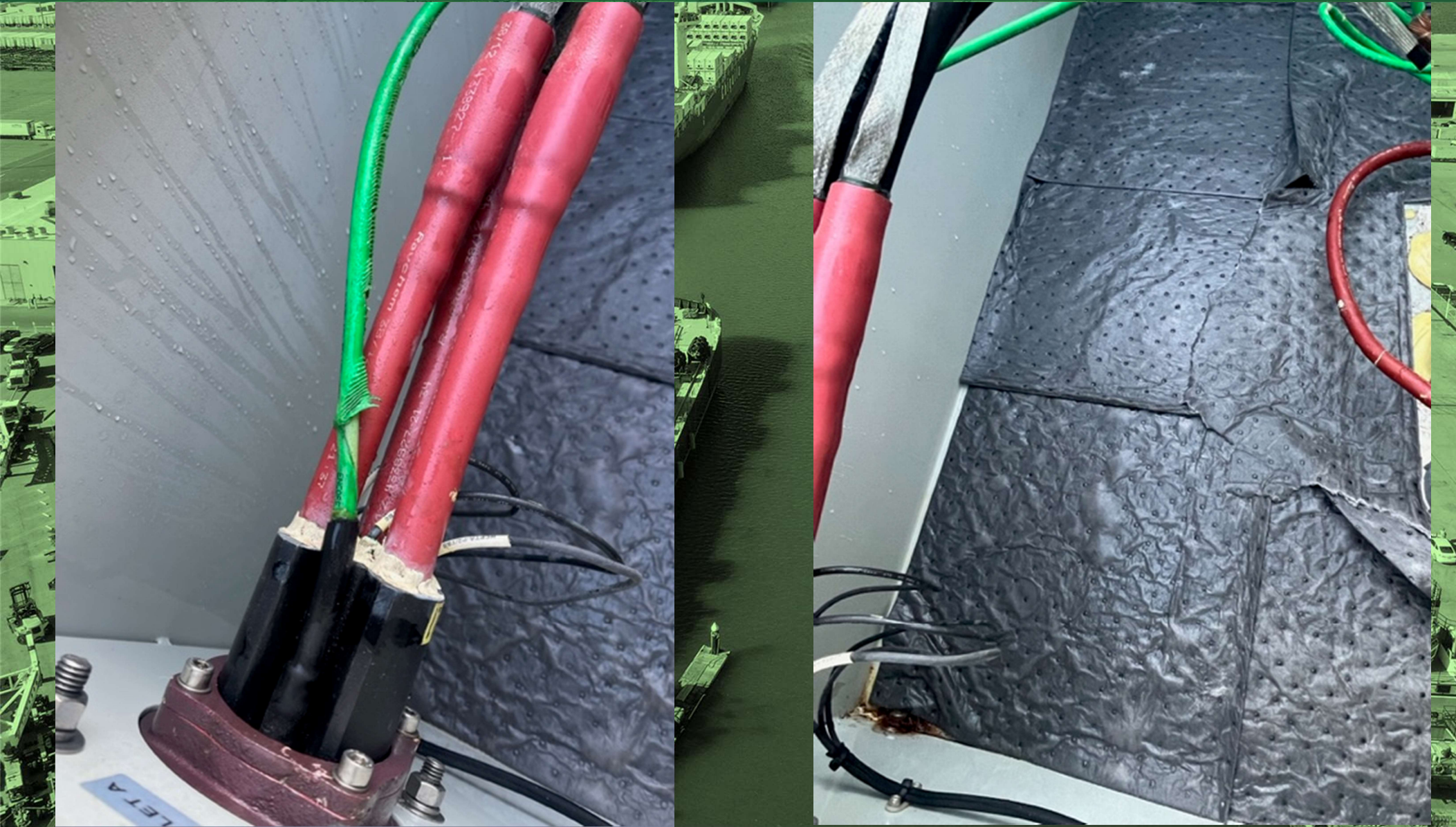
PORT PROPERTY- SHORE VAULT

DECEMBER 21ST



PORT PROPERTY- SHORE POWER VAULTS

DECEMBER 21ST



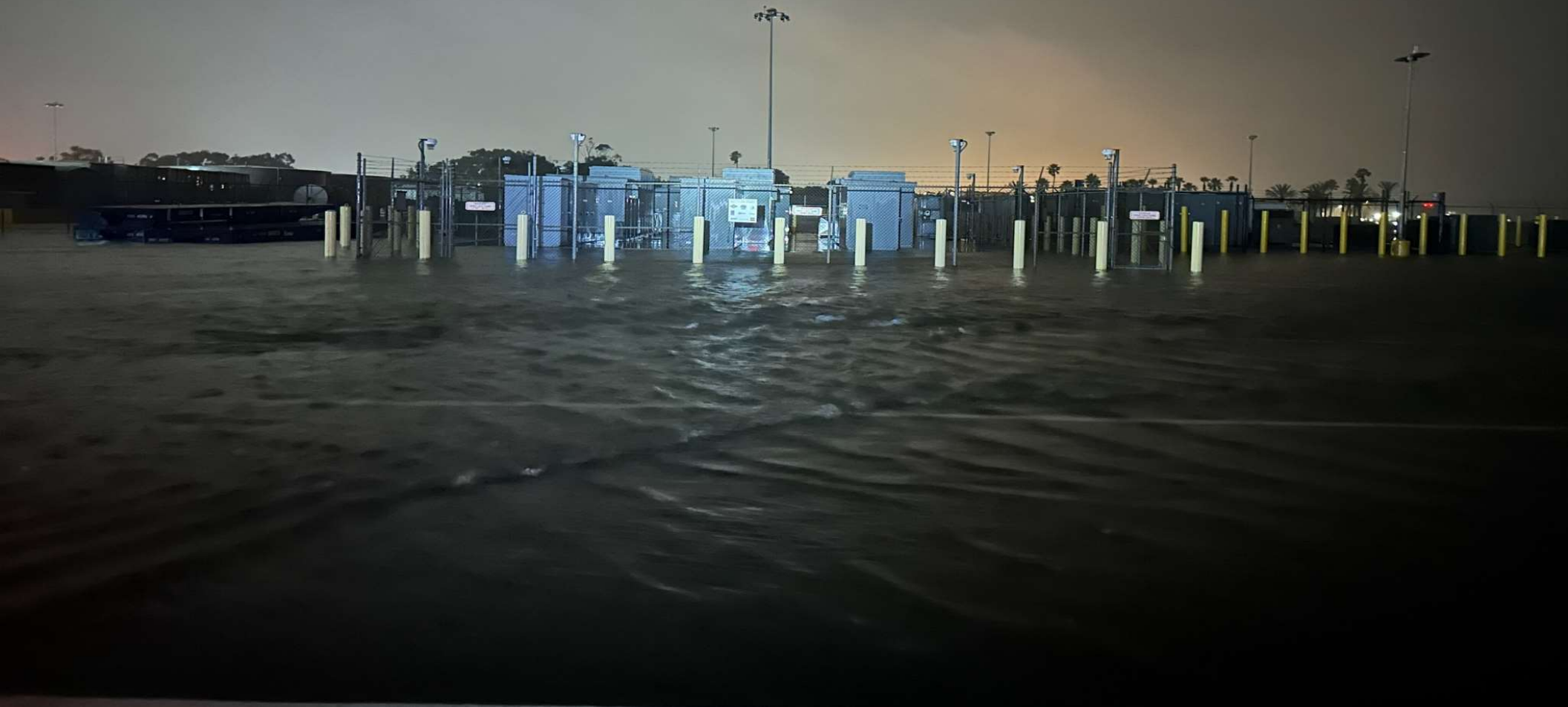
STORM DAMAGE IN THE COMMUNITY

DECEMBER 21ST



DECLARATION OF EMERGENCY ORDINANCE – HARBOR COMMISSIONERS

Urgency Ordinance approved by the Board of Harbor Commissioners on December 29, 2023, proclaiming a local emergency in response to a flooding and storm event that commenced December 21, 2023.



DAMAGE ESTIMATES

DECEMBER 21, 2023, STORM EVENT


Item	Description	Location	Cost Estimate	Insured
Shorepower Electrical Infrastructure; Shorepower Cavotec Boxes	6.6KV electrical switchgear and infrastructure that supplies power to the vaults/cables for vessel cold-ironing; Six shore power vault on the wharf front for vessels to plug into	South Terminal N34.14639, W119.20295	\$39 Million	Estimate Provided
Yara Office, electrical	Port tenant office sustained greater than 6" of water inundation that impacted its truck weigh scale, network/internet and automated systems	South Terminal- N34.14, W119.20	\$67,000	Under Deductible
Subaru Office	Port owned office building offsite sustained water inundation damage	Edison Dr. Oxnard- N34.14274, W119.16718	\$50,000	Under Deductible
SEIU Overtime	Emergency response and recovery overtime labor	See breakout attached	\$20,000	Under Deductible
Schnieder Electric Support	Emergency response/recovery support, survey and assessment(s) labor only	South Terminal N34.14639, W119.20295	\$10,000	Under Deductible
H3 Electrical Services	Emergency response/recovery support, survey and assessment(s) labor	South Terminal N34.14639, W119.20295	\$10,000	Under Deductible
Drain filters	Fabric filter media with drain baskets torn.	Throughout the port premises	\$20,000	Under Deductible
333 roof	Roof leaks into administration office	333 Ponomo St.	\$100,000	Under Deductible
319 roof	Roof leaks into Ports America Offices	North Terminal; east side of warehouse	\$40,000	Under Deductible
Skip loader and skidsteer	Equipment rentals for 5 days	port wide	\$5,000	Under Deductible
Dewatering pump rental	2 pumps and 150' hose x2	port wide	\$3,000	Under Deductible
Hose for dewatering pumps	50' x 8 hose extensions for dewatering pumps	port wide	\$1,700	Under Deductible

TOTAL DAMAGE

\$39,326,700

WHAT WE ARE DOING

SWIFT ACTION

- 
- 12/21 Storm Event – Incident Command Response
- 12/23 Initiated Insurance Process
- 12/27 VCOES Director Patrick Maynard –
Informative/Process Visit with Port Management
- 12/29 Emergency Proclamation- Board Adoption
- 1/11 Cal OES Performs Site Inspection with VCOES
- 1/23 Proclamation of State Emergency – Governor**
- 1/29 Insurance Adjusters Port Visit Scheduled

COMMUNITY STRONG

STANDING IN SOLIDARITY WITH THE PORT



- *Assemblymember Steve Bennett*
- *VC Supervisor Kelly Long*
- *VC Vianey Lopez Represented*
- *Mayor Misty Perez, Port Hueneme*
- *Office of Congresswoman Julia Brownley*
- *Office of Senator Monique Limon*
- *EDC Executive Director Bruce Stenslie*
- *Ventura County Transportation Com.*
- *Labor: ILWU; Local 585; Teamsters; LIUNA 585; Pipefitters; Iron Workers*
- *Southern California Edison*
- *Technical Experts*