

CLIMATE ADAPTATION PLANNING IN GOLETA

Presentation

By

**Anne Wells, Advance Planning Manager
City of Goleta**

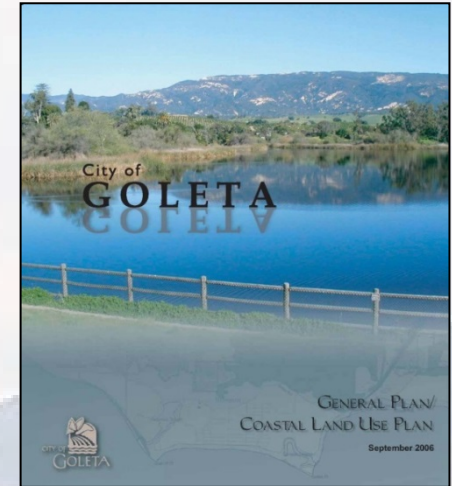


September 16, 2021

CLIMATE ADAPTATION PLANNING IN GOLETA

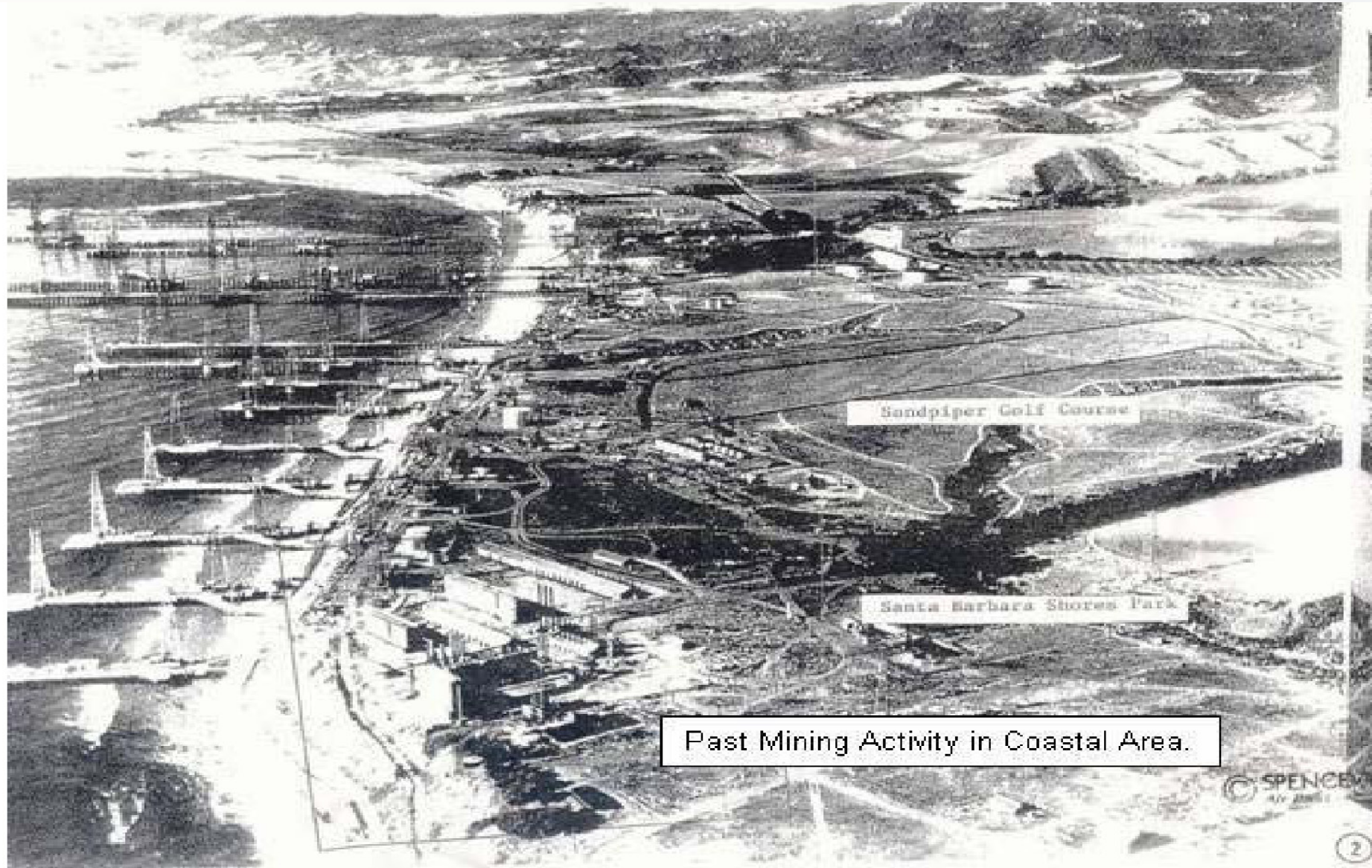
Planning Tools

- General Plan
- Climate Action Plan
 - Greenhouse Gas Emissions Inventory
 - Municipal Energy Efficiency Action Plan
- Coastal Hazards Vulnerability Assessment and Fiscal Impact Report
- Local Coastal Program (TBD)
- Community Wildfire Prevention Plan
- Multi-Jurisdictional Hazard Mitigation Plan



CLIMATE ADAPTATION PLANNING IN GOLETA

Adaptation Challenge: Oil / Gas Remnants in 1930s



CLIMATE ADAPTATION PLANNING IN GOLETA

Adaptation Challenge: Oil and Gas Remnants Now



Historic Oil and Gas Relicts on Ellwood and Haskell's Beaches

Broken and Eroding Old Oil and Gas Sea Walls on Ellwood Beach



CLIMATE ADAPTATION PLANNING IN GOLETA

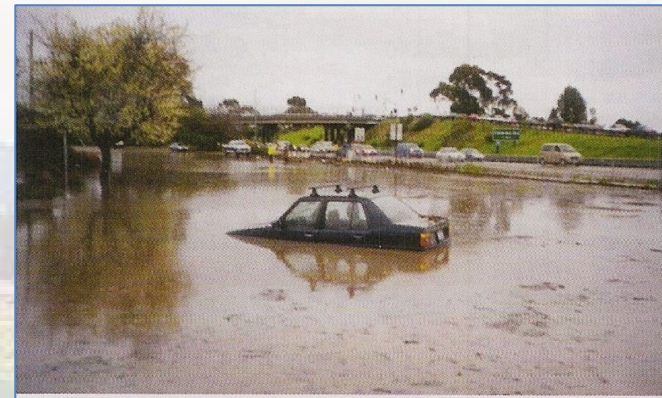
Adaptation Challenge: Shoreline and Bluff Erosion



Large areas of eroded bluff and shoreline at Haskell's Beaches and Bacara

CLIMATE ADAPTATION PLANNING IN GOLETA

Adaptation Challenge: Coastal Flooding

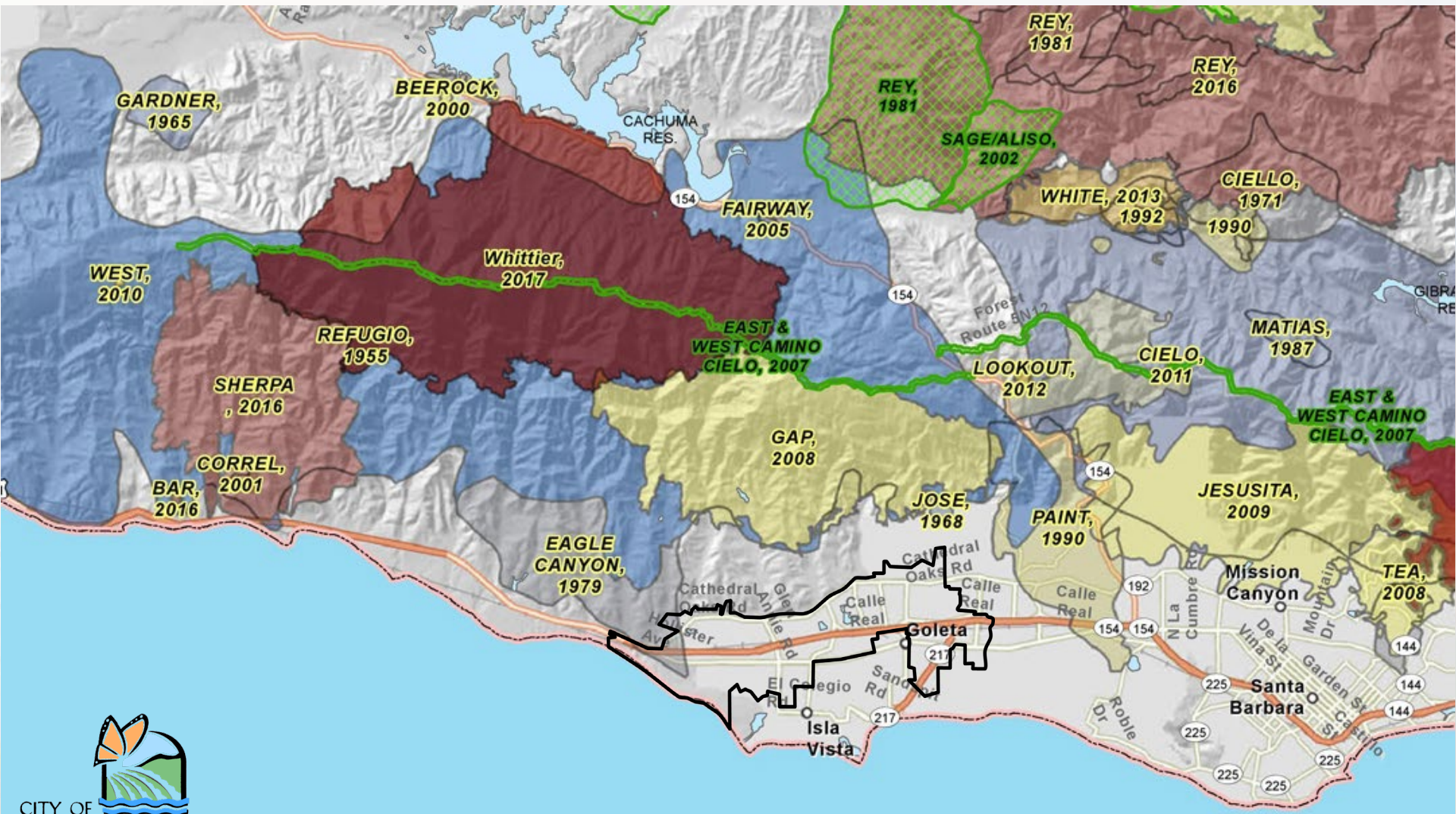


1995 photo of flooding at Calle Real in Goleta



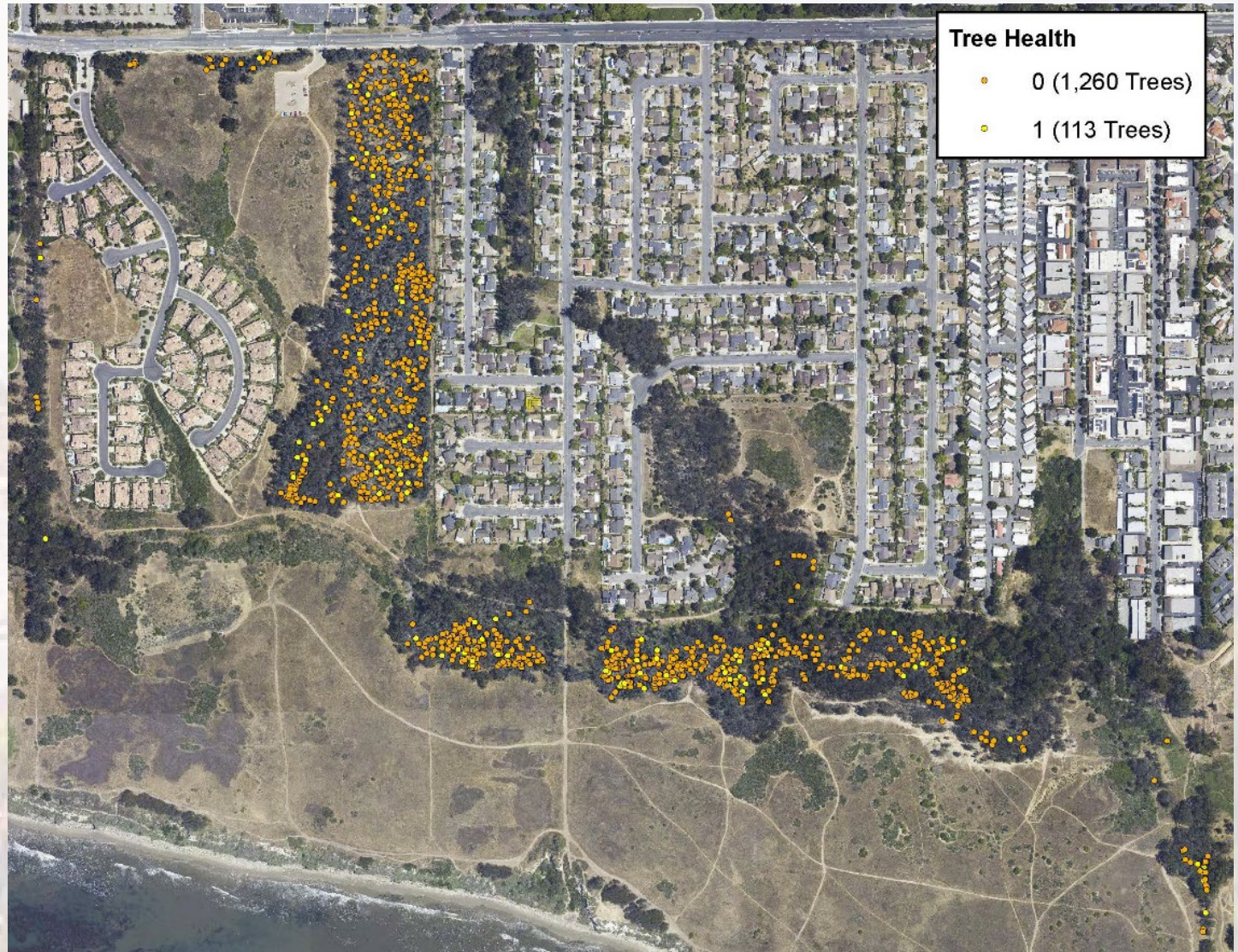
CLIMATE ADAPTATION PLANNING IN GOLETA

Adaptation Challenge: Wildland Fire



CLIMATE ADAPTATION PLANNING IN GOLETA

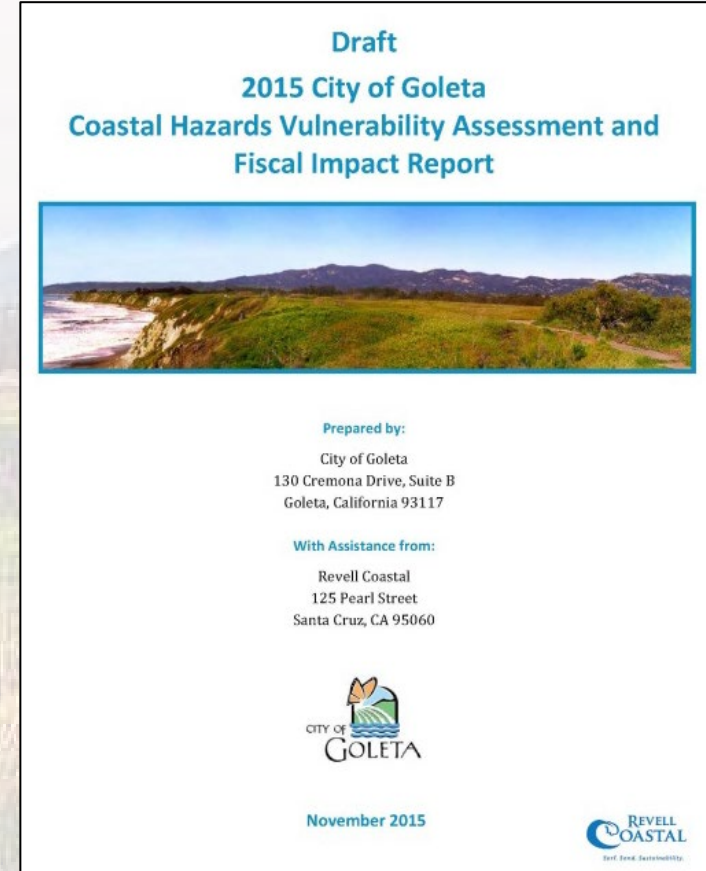
Adaptation Challenge: Tree Die-off (Ecosystem Impacts)



CLIMATE ADAPTATION PLANNING IN GOLETA

Coastal Hazards Vulnerability and Fiscal Impact Report

- Identify and map climate-induced hazards
- Identify vulnerable resources, infrastructure and development
- Quantify fiscal impacts of the risks
- Develop adaptation strategies to reduce the risk level
- Quantify cost of implementing the adaptation strategies
- Develop a Local Coastal Program



CLIMATE ADAPTATION PLANNING IN GOLETA

Coastal Hazards Report Outline

Section 1: Planning Background

Section 2: Physical Setting

Section 3: Climate Science

Section 4: Vulnerabilities and Fiscal Impacts by Sector

Section 5: Adaptation Strategies by Sector

Section 6: Implementation

Section 7: Policy and Regulatory Recommendations

Section 8: Monitoring

Section 9: Conclusion



CLIMATE ADAPTATION PLANNING IN GOLETA

Vulnerability Assessment

- Evaluate impacts of each type of hazard
- Assesses impacts to each asset category over time
- Identify threshold

Vulnerability Model

Planning Horizons: 2010, 2030, 2060, and 2100

Sea Level Rise:

Year	Low SLR	Medium SLR	High SLR*
2030	0.04 inches	3.5 inches	10.2 inches
2060	2.8 inches	11.8 inches	27.2 inches
2100	10.6 inches	30.7 inches	60.2 inches

CLIMATE ADAPTATION PLANNING IN GOLETA

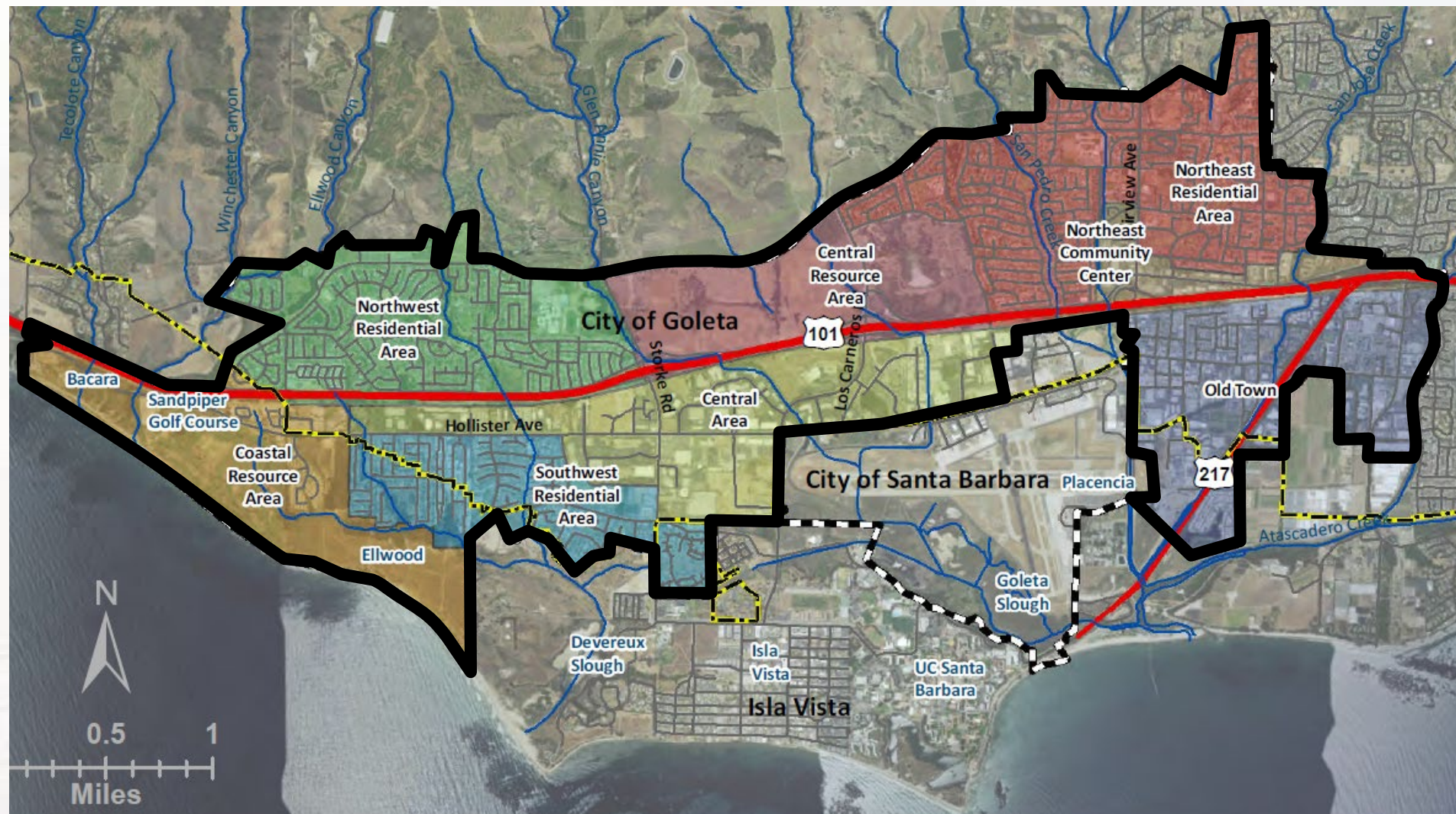
Coastal Hazards Report: Example Policies

- Relocation / Removal from Erosion-Prone Areas
- Transfer of Development Rights Program
- Structural Adaptation
- Habitat Adaptation
- Real Estate Disclosures
- Creek/Slough Sediment Management
- Regional Collaboration

CLIMATE ADAPTATION PLANNING IN GOLETA



CLIMATE ADAPTATION PLANNING IN GOLETA



Regional Collaboration

CLIMATE ADAPTATION PLANNING IN GOLETA

